

American Arachnology is a newsletter for arachnologists in the Western hemisphere sponsored by the AMERICAN ARACHNOLOGICAL SOCIETY. This issue contains news about past and future meetings of the Society, information about arachnological societies, publications, arachnologists and the translation pool. There is more on arachnological collections in museums and a very important QUESTIONNAIRE at the end. Finally there is also an up to date (October 1) list of American Arachnologists.

SOCIETIES
++++++

AMERICAN ARACHNOLOGICAL SOCIETY
=====

The AAS already has more than 175 individual members. We have a few institutional members and expect the number to increase sharply when the first issue of the Journal [see Publications] is published. To stimulate institutional membership, we ask that individual members associated with institutions show their respective serials librarian a copy and request subscription. We understand that Bob Mitchell will have a few sample copies for library inspection to distribute to institutions not represented by an existing AAS member.

We wish to stimulate and encourage membership among Latin American Arachnologists. May we remind you that the constitution provides for up to 5% membership gratis for low income workers or for countries where it is not possible to send money.

For information and/or membership, write to

Mel Thompson
Secretary-Treasurer, AAS
Whittier Narrows Nature Center
1000 North Durfee Ave
S. El Monte Calif 91733, USA

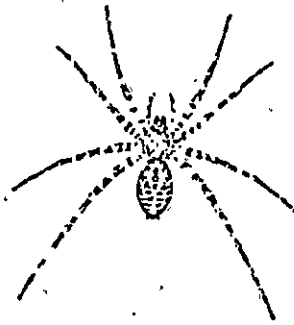
The Executive Committee bestowed Honorary Membership to C.I.D.A. so the library will receive our publications without charge.

C. I. D. A.
=====

Our organization grows so rapidly that it is possible that a few readers have not heard of the Centre International de Documentation Arachnologique. This organization is an international arachnological library and depends on contributions and donations for support.

Annually CIDA publishes a bibliography of arachnological works, which is mailed to subscribers; and about every 3 years a world list of arachnologists.

CIDA requires support in 2 forms. REPRINTS & MONEY. Please send 2 copies of all your reprints to CIDA. A monetary



American Arachnology

ISSUE # 10

OCTOBER 1973

EDITOR: B. Vogel

2505 Ashdale Drive
Austin Texas 78758
USA

contribution of US\$ 5 will pay for the cost of publishing and distributing the annual list. [AAS members, see Finance]. Arachnologists who are not AAS members, but would like to support CIDA send your check to

Prof. Dr. Max Vachon
Secrétaire general
C.I.D.A.
61, rue Buffon
75005 - PARIS
France

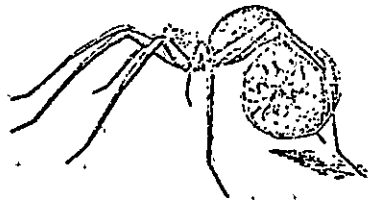


A TIMELY REMINDER: To help CIDA compile its annual bibliography, correspondents collect bibliographic data from all arachnologists. SEND your 1973 bibliography NOW to your correspondent. If you don't know your correspondent, send your 1973 list of published or in press papers to B.Vogel, Editor of AA.

BRITISH ARACHNOLOGICAL SOCIETY

BAS began publishing its Bulletin in 1969. The BAS also holds courses on spider identification, conducts spider surveys, field meetings and field study courses,, presents arachnological lectures.

Membership is open to all persons interested in arachnology. It is two pounds or US\$ 6. [AAS members, see Finance.]



FINANCE

DUES
=====

The Treasurer of AAS will soon be mailing out dues notice for 1974 dues. Since the only income of the Society is membership fees, you are urged to respond promptly . Payment for publication of the 1973 issues of the Journal [see Publications] will eat a big hole into our treasury.

For your convenience you may pay BAS dues and your CIDA contribution at the same time. This will mean 3 Societies with one check (admittedly, somewhat larger). We hope that by saving you the hassel of getting an international bank draft or some such you will be less likely to be delinquent in payment. We hope also to increase support for CIDA. [One year only 5% of arachnologists listed contributed any money.]

One disadvantage to this money collecting scheme is that if you are too slow with your payment, your subscription to 2 Journals will be cut off.

AMERICAN ARACHNOLOGICAL SOCIETY
TREASURER'S REPORT
31 July 1973

STATEMENT OF INCOME 1 Jan - 31 July 1973

Charter Memberships	85 @ \$20.00	\$1700.00
Regular Memberships	49 @ \$10.00	490.00
	1 @ \$10.00 (1974)	10.00
Student Memberships	35 @ \$5.00	175.00
Institutional Memberships	9 @ \$10.00	90.00
		<u>\$2465.00</u>

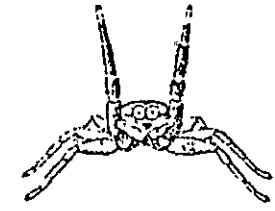
DISBURSEMENTS 1 Jan - 31 July 1973

Operating Expenses (Checks)	\$308.78
Secretary's Postage (Cash)	2.75
President's Postage (Cash)	13.00
	<u>\$324.53</u>

TOTAL ASSETS 31 July 1973

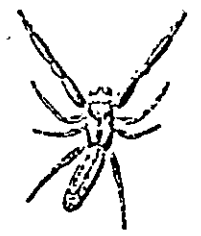
Checking Acct. First City Bank [L.A.]	\$2140.47
---------------------------------------	-----------

[Signed] Mel E. Thompson, Secretary/Treasurer
8 August 1973



*** FLASH ***

Among the many news items arriving as the newsletter goes to press is the news that the State of California has accorded tax exempt status on the AAS as a non-profit organization. Application to the US Internal Revenue Service can now proceed, but this is mostly a formality. Three Cheers to Mel for plowing through the bureaucratic procedure. Rah !! Rah !! Rah !!



MEETINGS

+++++

1973

American Arachnological Society, Northeastern Section, Penn State University, University Park, Penna. June 28-30.

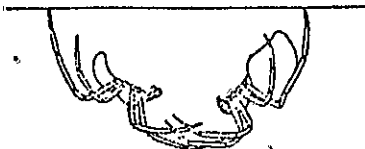
Report from Charles Dondale:

The northeastern section's meeting was excellent. About 25 persons were there, and most contributed to discussions. It was thrilling to get down to basics with people like Jim Carico on Dolomedes and Bill Shear on Opiliones.

We had a session set aside to discuss the aims and methods of the Society but the only things that came out of this were that (1) we must do more for the beginning arachnologist, and (2) the 1974 meetings should be regional rather than international in scope. For (1) we pointed out the Levis' book and Kaston's, plus the series that are appearing in the Journal. The basic need, however, as pointed out by Bob Snetsinger, is for about 2 weeks' lab instruction in anatomy as a preparation to use the existing books and keys. Herb Levi gave an excellent how-to-do-it lecture for beginners on Friday morning.

For (2), all the people present felt they would have been denied the pleasure of meeting if there had been a large central one, and that this was too much fun to forego in 1974. . . . A proposal was made to have an International meeting every three years with regional meetings on the remaining years.

We had a great half-day collecting trip in the mountains of north-central Pennsylvania and Bob showed us Penn State's deer and mushroom research facilities, both extremely interesting.



Western Session, Silver City, New Mexico, 14-15 August.

Another extremely enjoyable and profitable meeting. There were 35 registered participants, 17 of whom had attended the meeting at Portal in 1972. Californians again dominated the meeting with 14 present, and Florida led Texas 7-6. Others came from New Mexico, of course, Arizona, Illinois, Missouri, Oklahoma and England. Frances and John Murphy, who had visited the Southwestern Research Station, accepted Vince Roth's invitation to attend the meeting, and joined the AAS in Silver City.

The meeting began around 10:00AM on the 14th of August, with informal presentations of work in progress, and discussions of problems. Most everyone present contributed to the discussion. The business meeting scheduled for late afternoon was postponed until the next day due to a lack of a quorum of the executive committee at 4 PM. Some people arrived late in the day because of confusion about the starting hour of the meeting. Willis Gertsch was delayed by the non-arrival of a grand-child, but arrived in time for the pre-banquet libations.

For that evening, Martin and Kay Muma had arranged a banquet at a Mexican restaurant and delighted all with their table decorations - numerous and varied arachnids formed from colored pipe cleaners. We still have one as a souvenir of the meeting. After dinner, arachnologists drifted

off in small groups and discussions continued long into the warm night.

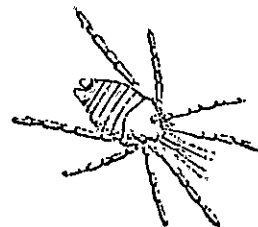
The second day began with a business meeting, continuation of discussions of work in progress and collecting techniques. All too soon, the meeting was officially over at noon, but many people lingered in the beautiful region for another day or more.

THE First International Congress of Systematic and Evolutionary Biology, held at Boulder, Colorado, August 4-12, was stimulating and exciting way beyond our expectations. We did not realize there were so many systematists - we believe over 1000 registrants. Scientists from the world over attended the week long orgy of meetings. As usual in such a large meeting with several symposia scheduled concurrently, the two we most wanted to attend each day occurred at the same time. It was nevertheless exhilarating to hear so much systematics being spoken and to learn that that science is still thriving.



We noted the names of several arachnologists in attendance, ran into a few as well, but it is our everlasting regret that we were not able to meet all of you. Too few, alas were able to also attend the arachnology meeting at Silver City the following week, but about half a dozen actually did.

A report of the ICSEB meeting will be published and sent to registrants, but it has not yet been released.



1974 MEETINGS

SIXTH INTERNATIONAL ARACHNOLOGICAL CONGRESS

22 - 30 April

AMSTERDAM

The Congress will be April 22 - 26, to be followed by a field trip 27 - 30. The registration fee is expected to be about \$55. Anyone interested who has not already registered may write

L. Vlijm, Organizing Committee
6th Arachnological Congress
De Boelelaan
Amsterdam B'VELDERT
THE NETHERLANDS



We are planning to attend and would like to hear from anyone who has similar plans.

AAS EASTERN SECTION

Lynchburg College, Lynchburg VIRGINIA - August 2 & 3. James Carico, Host.

Situated in Atlantic Piedmont, All participants can be housed on campus in air-conditioned dormitories, room and meals \$9/day. Participants who prefer to live off campus may eat at the cafeteria at reasonable rates. Conference rooms are available. FREE camping on campus near a 25-acre lake. Field Trips. Details about the program in the next newsletter.

AAS WESTERN SECTION

1974

Sante Fe NEW MEXICO, August 14-16, Don Lowrie, Host.

Sante Fe is situated at the edge of the upper Rio Grande Basin at 7000'. Hot days in summer but comfortable nights. Ample tourist facilities, Forest Service campgrounds about 20 minutes away. Meeting rooms available at the College of Sante Fe.

The annual Indian Fair is scheduled for the weekend following the arachnology meeting, and if anyone has a desire to buy or look at turquois and silver jewelry, that is the time. Many museums, historical and archeological sites of great interest.

Tentative schedule for the meeting:

Aug 14 - 10:00 AM, General Meeting
Lunch
Field trip

Aug 15 - Presented papers at College of S.F.
Business Meeting, Late afternoon
Banquet

Aug 16 - Symposium on Ecology of Spiders
Concluding Lunch

Registration in Spring Newsletter.

FUTURE MEETINGS (1975 and so on)

There had been mention of a Panama meeting in 1975, which was received enthusiastically at the Northeastern Section, but unenthusiastically at the Western Section during the AAS business meeting.

The consensus was that few North Americans would be able to attend a Panama meeting and that Central and South American workers should organize regional meetings before holding a single continental meeting.

The 1975 meeting has tentatively been scheduled for Warrensburg, MISSOURI.

We also have invitations for future meetings at San Francisco, Carbondale Illinois, and Santa Barbara California. A Meetings Committee will be formed to take care of these matters.



Publications

JOURNAL OF ARACHNOLOGY

As the newsletter goes to press, so does the first issue of the JOURNAL ; Bob Mitchell, Journal Editor, optimistically hoped to have the first issue mailed out at the beginning of summer, but the birth of such a monumental work is not without complications.

The first issue of the JOURNAL is expected in October, and the second issue is also already typeset - ready to be printed on the heels of the first. We should have two issues this year, and possibly a third, which would place us back on schedule.

Actually, the time elapsed from the formation of the Society to the first publication of its journal is amazingly short. One might note that 35 years elapsed from the formation of the American Association for the Advancement of Science to the issuance of their publication Science.

Arachnologists wishing to contribute to the Journal of Arachnology should write



Robert W. Mitchell, Editor
Journal of Arachnology
Department of Biology
Texas Tech University
Lubbock Texas 79409
U S A

for Instructions to Authors to assist you in preparing your manuscript.

BACK ISSUES OF AMERICAN ARACHNOLOGY

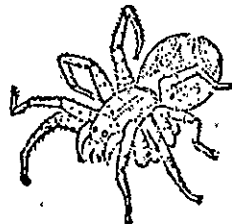
New Subscribers! Back issues of this newsletter can be purchased for 40¢/ number, or \$3.50 (US) for the set 1-9. Orders should be sent to

Bea Vogel, Editor
American Arachnology
2505 Ashdale Drive
Austin Texas 78758 USA



DO NOT CONFUSE THESE TWO PUBLICATIONS

Comments, contributions, news items, remarks and frivolities eagerly solicited for the newsletter.



BONNET'S INDISPENSABLE BIBLIOGRAPHIA ARANEORUM - I

has been reprinted and is readily available . . . \$30.00

Entomological Society of America
4603, Calvert Road, Box AJ, College Park, Maryland, U.S.A. 20740

And many thanks to Elwood Zimmerman of Canberra, Australia for this reminder.

HOW TO KNOW THE SPIDERS - - ERRATA.



2nd Edition B. J. Kaston has asked that we publish errors in the first printing. These will be corrected in the 2nd printing of How to Know the Spiders.

On Page 138 spiders which fit the alternative 1b should be taken further to couplet 3 (not 6 as indicated).

On Page 173 spiders which fit the alternative 2a should be taken further to couplet 5 (not 4 as indicated).

CATALOG OF NORTH AMERICAN SPIDERS

In American Arachnology # 8, Vince Roth proposed the compilation of keys and species lists of North American spiders, by family, as a team effort of specialists and workers on North American spiders.

In AA # 8 were the family Diguettidae, Homalonychidae and Hahnidae; # 9 contained Gnaphosidae including a speed key and an illustrated key.

Unfortunately, parts of the Gnaphosidae section were illegible in many copies of the newsletter. This was caused by an unforeseen technical difficulty. It had been typed on erasable bond. Since it was typed by electric typewriter the copy was nice and black so we thought it would be alright. However, the Xerox 7000, the machine that reduces 2 pages to 1 does not read erasable bond easily, and the copies lost too much in reduction.

- ⇒ Future sections of the CATALOG will be published in the JOURNAL of ARACHNOLOGY, not the newsletter, American Arachnology. ←
- ⇒ Families already published in the newsletter (above) will be reprinted in the Journal. ←

The procedure for workers on the Catalog will be the same. When you have finished compiling your section it is to be sent to Vince Roth, so he and Willis Gertsch can check it for synonymy & etc. Then it will be forwarded to the Journal for publication. Be sure to prepare your manuscript according to the Journal's Instructions to Authors.

ECOLOGY of the TRUE SPIDERS
(ARANEOMORPHAE)

Turnbull, A. L., 1973.
Ann. Review Entomol. 18: 305-348.

While we were attending the ICSEB in Boulder, a student noticed our name badge which said 'American Arachnological Society' and asked

"Why isn't anyone doing spider ecology?"

This widespread misconception occurs not only among biologists in general, but among arachnologists as well. In his Concluding Remarks (p.333) Turnbull says

"A number of authors have commented on the dearth of papers on spider ecology. Many indeed claim to be the first contributors. I have not found a gross shortage of papers to be the problem; quite the contrary, as my references, which are by no means a complete bibliography, clearly show. [Turnbull reviewed 331 papers. BV]

"I wish I could also say that I had found no shortage of good papers, or good, well-supported information on spider ecology. There are some excellent papers, but there are also large quantities of repetitious mediocrity. I am dismayed at the number of papers that, if they do not belong in ecology, do not belong anywhere, that leave me wondering why they were written, or if written why any journal published them. They are often the product of crudest methodology; they present data sets

that cannot be analyzed; they come to no conclusions; and they are not put into any sort of relationship with general principles, ecological or otherwise."

The second paragraph is somewhat damning, but clearly a result of the condition described in the first. Arachnologists have greatly suffered from working in isolation and lack of communication with not only other arachnologists, but from all biologists. If there had been more information exchanged between arachnologists during the past years, such remarks could not have been made.

We feel that Turnbull's criticisms result in part from comparisons with spider ecology and ecology of other groups. It is true that spider biology has been neglected, has received relatively little support and that our explorations are still in a beginning stage.

However, I do not mean to deny the validity of Turnbull's remarks. I think we all should take them very much to heart, and each do what we can to prevent such comments in the future. We see as one of the primary functions of the Society, the Journal and the Newsletter improved communications among arachnologists.

Incidentally, this was intended as an announcement of a noteworthy publication, but we got carried away.

+++++



+++++

DID you receive your newsletter?

YES, or you wouldn't be reading this. But with every issue of American Arachnology we receive at least half a dozen complaints that the newsletter was not delivered. In 5 out of 6 times it is the fault of the addressee - moved and did not notify US of forwarding address.

It costs US, the Sender, to have the post office forward 3rd class mail - they do not distinguish between an exciting newsletter and some ho hum advertisement. If we do not guarantee Return Postage on undeliverable mail then your newsletter is thrown away - 50¢ worth for each piece!

IF YOU MOVE DURING THE NEXT YEAR, SEND US YOUR ADDRESS AS SOON AS YOU DO.

To the unfortunate 1 out of 6 who did not move and who did not receive the newsletter either, our sympathy. All we can say is write immediately* and we still may have a free copy of the current newsletter to send you.

* Immediately is like after November 10th or May 10th.



REQUEST FOR SPECIMENS
+++++

I am conducting a statistical study of certain species of the spider genus Loxosceles and am requesting specimens for loan, both ♂ and ♀, adults only. All will be returned. Specimens from localities in Nevada, Arizona, California and Northern Baja California would be especially appreciated.

Franklin Ennik
7760 Stockton Avenue
El Cerrito CA 94530





COLLECTOR - RETURN THAT ROCK?

What happens to the home of the wee creatures after they have been collected? When you collect arachnids from under rocks and logs what do you do with the rocks and logs afterwards? We know some biologists (herpetologists) who contend that the habitat is transient anyhow, and as the rock sinks into the ground, the habitat is destroyed, so by leaving the rocks on a fresh surface, new habitats are being created. On the other hand, we have read some extremely scathing blasts like that of Joel Hedgpeth about people who fail to replace (intertidal) rocks to their exact resting place.

The only discussion of understone communities we could find is in Introduction to High Altitude Ecology by M. S. Mani (1962, Methuen & Co. Ltd. London). The understone communities discussed by Mani are probably somewhat specialized being above timber-line in the Himalaya. They present perhaps the most favored of habitats in the location and provide optimal conditions for the largest majority of species. Temperature-humidity fluctuations are minimal, humidity is relatively high and the species are sheltered from light and wind, but there is no marked ecological stagnation such as is usual in caves. The animals are generally hygrobionts with low temperature valance and are carnivorous or feed on debris. Some of these generalizations might well characterize the understone habitat and residents in other localities.

This has been prompted by Frank Ennik who wrote "Recently I returned from a collecting trip in the Mohavian Desert where I collected a large number of Loxosceles for my thesis problem. I revisited several locations on this trip that had no specimens because (I believe) the habitats were destroyed by some previous collectors. Prior accumulations of debris and rocks were so scattered that few specimens could be found. I think that reestablishing habitats as they were found should be a prime concern of the arachnologist if (s)he expects to find the animals at a later date."

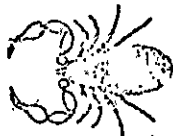
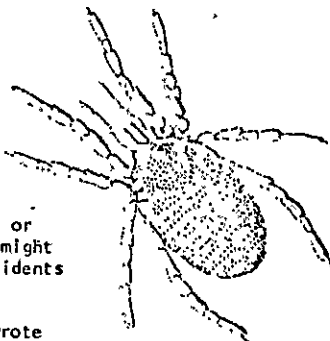
What has been your experience with this? We would especially like to hear from people who have collected for several years in the same place, but all responses will be published.

* * * * *

ARACHNOLOGY AND THE NON-ARACHNOLOGIST

At the Northeastern section meeting of the AAS a consensus was reached that more should be done for the beginning arachnologist. At the western section meeting it was pointed out that one big stumbling block in providing identification services for ecologists and entomologists was that arachnologists too often received unsorted material. We feel these two problems are related and have a common solution.

What we need is a series of workshops, or technical field courses, in various parts of the continent, somewhat patterned after the field course of the British Arachnological Society. We envision a 2 or 3 weeks course, with each day beginning with a field trip, and the afternoon spent sorting and



identifying the catch. Probably a lecture or two on external anatomy would be necessary, and the students could learn to recognize the families and more common genera without using keys. They would become familiar with existing keys and identify the less common genera. The course would be given for no credit and be offered for both professional entomologists and beginning arachnologists.

We think anyone interested in initiating and instructing such a course could be given the sponsorship of the American Arachnological Society. Perhaps it might even provide some revenue for the Society. Someone with access to a field station would be ideally set up for it, but it need not be through the auspices of a college.

Anyone interested in setting up such a course, write Bea Vogel.

NEWS ABOUT ARACHNOLOGISTS

Joe BEATTY wrote us (last February) he was just leaving to spend a few months of his sabbatical on the Caroline Islands in the West Pacific.

Ralph GORTON, a recent addition to our list, is teaching a Natural Science course at Lansing Community College [Michigan]. His interest in spiders was stimulated by Richard Saur at Michigan State University and Charles Dondale in Ottawa. Ralph recently completed a MS in Medical Entomology at Michigan State and spent the past summer investigating spider ecology in Connecticut in connection with a summer program for advanced high school students.

Raymond MANUEL, another new listing, is a graduate student at MacDonal College studying spider ecology with emphasis on quantitative studies of prey.

Karen MENDERS, new listing, is a graduate student at Ohio State University, working on the spider fauna of Cedar Bog, Champaign County Ohio.

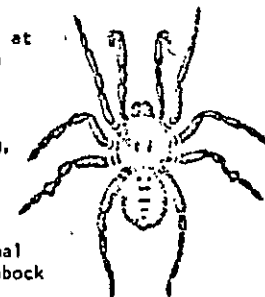
Bob MITCHELL had a busy summer. Among other things he spent 5 weeks in Yucatan engaged in some underground activities, and immediately after attended the International Speleological Congress in Czechoslovakia, returning to Lubbock just in time to begin a new semester.

Larry PINTER spent the past winter in Mexico studying Spanish and collecting spiders. He says this has been a banner year for collecting in California because of the generally lower temperatures and twice the normal rainfall. He seems to have moved again because we just received his new address from Pago Pago.

We are happy to announce that Norman PLATNICK has accepted the position vacated last March by John Cooke at the American Museum of Natural History. Norm began at the Museum in September.

John RANDALL, a new charter member of the AAS, is currently a graduate student with Will Whitcomb at the University of Florida. John graduated from Maryville College in Maryville Tenn in 1971, where he did 2 ecological studies of spiders and one developmental study. For 2 years he was a physicians assistant/clinical research technician in inhalation challenge procedures.

Terry SEDGWICK will be spending a year or two in Japan. He did not write what he would be doing, but will presumably have something to do with Japanese spiders.



During the past summer, Bea VOGEL was the recipient of a Theodore Roosevelt Grant from the American Museum of Natural History, for field work. Bea traveled nearly 8000 miles throughout the Rocky Mountains, and particularly in Chamberlain & Ivie country in search of syntopic Pardosa (and finding them too!)

 We regret to report the death of Lutz J. BAYER in an automobile accident on April 24, 1973. He was a graduate student in the Department of Entomology at the University of Wisconsin.

TRANSLATION POOL

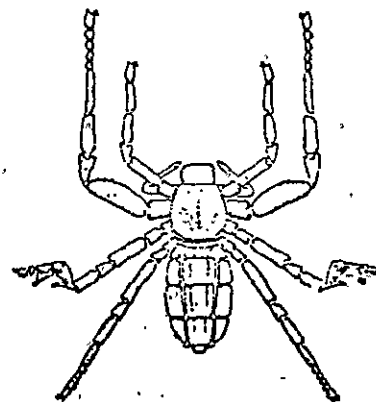
The Translation Pool now contains 24 papers which are available for the cost of reproduction. As you translate articles, send a copy to the POOL, so your work need not be duplicated by another arachnologist. So far, all the papers are INTO English, but there is no reason the Pool could not include translations into other languages as the need arises; However, english speakers tend to be more chauvanistic (or less lingual?) than others. Anyhow, contributions from both short-tongued and long-tongued workers are welcome.

In charge of the Translation Pool is

Sue Riechert
 Zoology Department, Hesler Bldg
 University of Tennessee
 Knoxville Tenn 37916

- Alicata, Pietro. 1964. The Italian species of Harpactocrates Sim. and Paachtes n. gen. (Araneae, Dysderidae). Year Book of Inst. and Mus. Zool. Univ. Naples. 16(3):1-17.
- Blumenthal, H. 1955. Investigations of the tarsal organ of spiders. 667-719.
- Bolivar Y. Pieltain, C. 1946. Discovery of a new tick-spider (Ricinulideo) in central Mexico. 1-10.
- Bolivar Y. Pieltain, C. 19 . Study of the Ricinulideo of the cave of Cahauñilpá, Guerro, Mexico.
- Buche, W. 1966. Contribution to the Ecology and Biology of Winter-mature micro spiders with particular reference to the Linyphiids Macrargus rufus rufus (Wider), Macrargus rufus carpenteri (Cambridge) and Centromerus silvaticus (Blackwall). Z. Morph. Okol. Tiere 57, 320-448.
- Casimir, H. 1961. Some new and rare spiders from Germany. Zool. Anz. 166: 195-206.
- Delgado, Alvaro. 1968. Biocenotic aspects of Loxoscelism. Bol. chil. Parasit. 23 (1-2): 68-74.
- Doklady Akad. Nauk SSSR. TOM 117 (5). 881-884.
- Dubinín, V. B. 1957. On the orientation of the cephalic end of Devonian pycnogonids of the genus Palaeoisopoda and their systematic position in the arthropoda.
- Fonseca, Canceleda da. 1967. Information theory applied to the productivity of soil micro-fauna: in K. Petruszewicz (ed.) Secondary productivity of terrestrial ecosystems II.

- Galiano, M. E. 1967. Life Cycle and Development of Loxocedes laeta (Nicolet, 1849) (Araneae, Scytodidae). Acta Zoologica Lilloana, 23: 431-464.
- Gertsch, W. J. 1961. Loxosceles laeta (Nicolet). A valid name for a spider causing loxoscelism in South America. Bol. Chil. Parasit. 16(1): 2-4.
- Gossel, ? 1935. Contributions to the knowledge of the skin sense organs and skin glands of the chelicerates & eyes of Ixodids. Zool. Inst. der. Univ. Rostoc R. Dissert. 177-205.
- Harm, M. 19 . Contributions to the knowledge of the structure, function and the development of the accessory copulation organs of Segestria bavarica C. L. Koch. Z. Morph. Orol. Tierre 22: 629-670.
- Homann, H. 1931. Contributions to the physiology of spiders' eyes III. The lycosids capacity of sight. Zeits. Vergleich. Phys. 14(1) 40-67.
- Keller, L. R. 1961. Investigations on the olfactory sense of the spider species. Cupiennius salei Reysenling. Zeltschr. fur vergl Phys. 44: 576-612.
- Knulle, W. 1952. The geomorphological principles of the ecology of sea-coasts and their significance for the spatial distribution of spider communities, Kieler Meeresforschungen, Vol. 9, (1).
- Knulle, W. 1954. Lycosa Purbecrensis F. O. P. Cambridge (Lycosidae: Aranea), a German coastal species. Kieler Meeresforschungen, Band X, Heft. 1.
- Knulle, 1954. On the taxonomy and ecology of the North-German species of the spider genus, Erigone. Aud. Zool. Jahrbuch. 83: 63-110.
- Kullmann, E. 1961. On the hitherto unknown web and courtship of Drapetisca Socialis (Sund.): Dechiana Bd. 114, Heft/. Bonn: 99-104.
- Palmgren P. 1939. The Finnish spider fauna I Lycosidae: Acta. Zool. Fenn. 25: 5-86.
- Tretzel, E. 1954. Maturity and Reproduction Periods in spiders. Morph. Orol. Tiere. 42: 634-691.
- Vachon, Max. 1963. The Systematic use of the Teeth on the chelicera of Scorpions. Bull. Nat. Mus.-Nat. Hist. Ser. 2:35 (2) 161-66.
- Wiehle, H. 1960. Embolus of the male spider palp. Verhandlungen De Utsch. Zool. Gesellsch. in Bonn. 458-480.

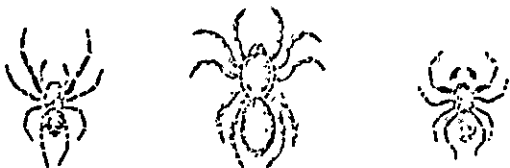


ARACHNID COLLECTIONS

DURING the past few years there has been a growing realization that systematic collections were a neglected branch of science, and the beginning of concern about their condition. In the United States we now have an ASSOCIATION of SYSTEMATIC COLLECTIONS. Membership seems to be limited to institutions which house major collections, but there are several ADVISORY COMMITTEES representing specific interests in systematic collections.

THE AMERICAN ARACHNOLOGICAL SOCIETY now has a Committee on Systematic Collections which can act as an Advisory Committee to the ASC. Herb LEVI is the chairperson of the AAS committee, Norm PLATNICK, Bill PECK and Bob SCHICK are the other members. These people represent the 4 largest arachnid collections in the United States.

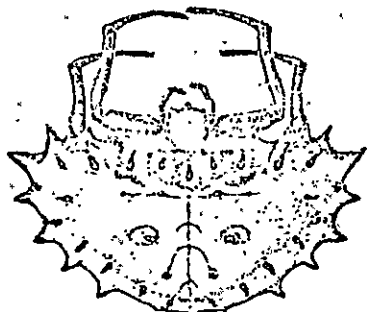
IN the US, the Committee on Environmental Quality established a Panel on Systematics and Taxonomy. Systematic collections are no longer just a bunch of dead animals, but have been elevated to the statue of National Resource.



IN order to assess the nature and condition of our National Resource in arachnid specimens, the AAS Committee solicits your cooperation in collecting information about collections.



THE last page of this newsletter is a QUESTIONNAIRE about your collection, or the collection in your care. Please FILL IT OUT AND RETURN IT TO THE Committee. We wish all readers of American Arachnology to respond, not only those in the United States. Systematic collections should be considered a scientific resource, which transcends national boundaries.



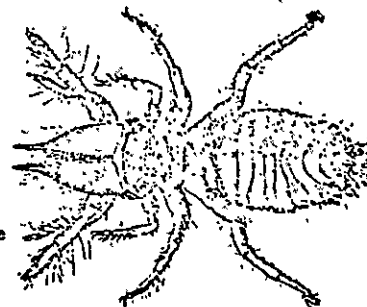
REPORTS FROM ARACHNID COLLECTIONS

We began reporting on some of the larger US collections in the last newsletter and we have some more information other collections. We thank those who have sent us information about their collections, and hope they will be kind enough to also fill in the Questionnaire.

BURKE MUSEUM
University of Washington
Seattle Wash 98105

Rod Crawford, Curator

SPIDERS, 20,000. Mostly from collections of Harriet Exline, Bob Thompson and Rod Crawford. 3/5 identified, 2/5 being processed.
HARVESTMEN [Harvestpersons?] 500+, Various sources, largely undescribed species which will have to remain so because of the unstable taxonomy of their group.
SCORPIONS, 150. Mostly Paruroctonus boreus.
PSEUDOSCORPIONS, 300. Mostly collected by Exline and Crawford, not identified.
SOLPUGIDA, 20. Would like to increase holdings, especially of Washington specimens.
UROPYGIDS, AMBLYPYGIDS, 5.



+++++

UNIVERSITY of CALIFORNIA, Riverside
Department of Entomology
Riverside Calif 92502

Saul Frommer, Curator.

The holdings are small but choice, primarily Sonoran Desert. The non-insect arthropods fill about 114 museum jars. The collection is not as well sorted as Saul would like, but he is most interested in making specimens available to arachnologists. He especially invites scientists to visit and sort through the material. If loan requests must be by mail then they should include adequate descriptions and illustrations of the groups of interest. Without these requests are difficult to process.

+++++



UNIVERSITY OF MINNESOTA
Department of Entomology
Fisheries and Wildlife
St Paul Minn 55101

Edwin F. Cook, Curator

Bruce Cutler writes that the total arthropod collection is well over 1,000,000, but arachnids only a few thousand, mostly spiders identified by Gertsch in the 30's. About 95% of the spiders are from Minnesota, and most of the rest from Korea. Cutler's private collection is Salticids, primarily nearctic ant-like ones, which he is slowly incorporating into the Univ of Minn collection. This collection is available for loan.

+++++

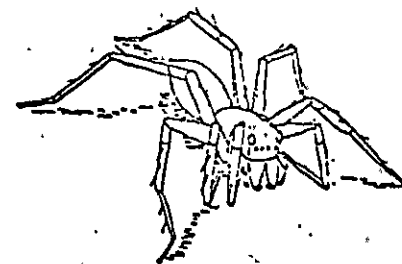
BRITISH MUSEUM (Natural History)
Cromwell Road
London SW7 5BD, England

K.H. Hyatt and F.R. Wanless, Curators

ACARI : 281,000
OTHER ARACHNIDA 596,000 (58% spiders)
Also extensive unnamed collections. Approximately 8,000 unnamed New World spiders, mostly neotropical. Available for loan and identification.

Spider Collection as of April 26, 1973

	<u>North America</u>	<u>Neo- Tropical</u>	<u>Indo- Australia</u>	<u>India</u>	<u>Korea, Okinawa & Japan</u>	<u>Philip- pines</u>	<u>Africa</u>	<u>Tahiti</u>
Acanthoecidae	---	9	---	---	---	---	---	---
Agelenidae	140	10	---	---	60	10	4	---
Amaurobiidae	36	---	---	---	---	---	3	---
Antrodiaetidae	2	---	---	---	---	---	---	---
Anyphaenidae	68	10	---	---	4	3	---	---
Araneidae	600	540	17	15	120	340	2	5
Atypidae	2	---	---	---	---	---	---	---
Clubionidae	148	40	1	5	35	90	2	3
Ctenidae	5	1	---	---	8	9	---	---
Ctenizidae	11	10	---	---	2	---	---	---
Dictynidae	397	---	---	---	3	---	---	2
Dinopidae	---	1	---	---	---	---	---	---
Dipluridae	2	---	2	---	1	3	---	---
Dysderidae	---	4	---	---	4	---	2	---
Eresidae	---	---	---	---	---	---	2	---
Filiscatidae	12	---	---	1	---	---	---	---
Gnaphosidae	98	5	5	---	40	1	3	---
Hahnidae	9	---	---	---	15	7	---	---
Hypochilidae	7	---	---	---	---	---	---	---
Linyphiidae	454	15	41	1	20	120	---	2
Loxoscelidae	12	---	---	---	---	---	1	---
Lycesidae	533	50	1	8	155	15	9	---
Mecicobothridae	15	---	---	---	---	---	---	---
Microphantidae	648	40	---	---	15	20	---	5
Migidae	1	---	---	---	---	---	---	---
Mimetidae	4	1	---	---	---	---	---	---
Oecobiidae	---	4	---	---	---	---	1	---
Onopidae	1	2	---	---	---	4	---	4
Oxyopidae	50	7	7	---	5	11	4	---
Prociidae	9	30	---	---	1	20	6	---
Pisauridae	207	550	4	3	20	55	---	---
Platoridae	---	---	---	---	---	---	1	---
Salticidae	424	170	11	4	100	240	5	7
Scytodidae	6	12	---	---	---	---	2	2
Selenopidae	---	1	---	---	---	---	2	---
Sparassidae	2	15	---	1	---	20	6	6
Tetragnathidae	196	20	2	---	15	30	---	---
Theraphosidae	41	130	---	---	---	12	3	---
Theridiidae	255	40	1	2	20	60	7	2
Thomisidae	277	20	6	1	90	90	12	1
Uloboridae	23	7	---	---	---	20	---	---
TOTAL	4,695	1,744	98	41	733	1,180	77	39



*** DIRECTORY of AMERICAN ARACHNOLOGISTS ***

--- FALL 1973 ---

* Member, American Arachnological Society

** Charter Member

No symbol, Newsletter only

A

ABALOS, J. W.
Facultad Ciencias Exactas
Fisicas y Naturales
Dept de Zoologia
Velez Sarsfield 299
Cordoba, Argentina

ALLEN, Terry M. *
5931 Belice St
Long Beach CA 90815

ALLRED, Donald M. **
Brigham Young Univ
799 Wids
Provo, Utah 84602

ALTERI, Charlotte M. **
Butler St
Wolcott N.Y. 14590

AMER ENTOMOLOGICAL SOC
LIBRARY *
1900 Race St
Philadelphia PA 19103

ANDERSON, John F. **
Zoology Dept
Univ of Florida
Gainesville Florida 32601

ASPEY, Wayne P. *
Ohio University
Morton Hall
Dept of Zoology
Athens Ohio 45701

AZEVEDO, William E. *
Dept of Entomology
Univ of Arizona
Tucson, Ariz 85721

B

BAILEY, Hector *
Univ of Montreal
2490 East Sherbrooke St Apt 6
Montreal 134, Que
Canada

BARE, Rex O
606 N 29th Place
Lawrence Kansas 66044

BARRERA, Alfredo
Museo de Historia Natural
de la Ciudad de Mexico
Nuevo Bosque de Chapultepec
Apt. Postal 18-845
Mexico D. F. Mexico

BASS, James T. *
507 Barlow St
Americus Georgia 31709

BAUAB-VIANNA, Maria Jose *
Faculdade de Ciencias Medicas
e Biologicas de Botucatu
Caixa Postal 103
Rubiao Junior, S. Paulo 1860
Brasil

BEATTY, Joseph A. **
Dept of Zoology
Southern Illinois Univ
Carbondale Ill 62901

BEER, Robert E
Depts Entomology,
Systematics & Ecology
Univ of Kansas
Lawrence Kansas 66044

BENNER, Bill
1442 Durham Rd
Pender, Penna 19047

BENTZIEN, Michael M. *
Div of Entomology
Univ of California
Berkeley CA 94720

BERRY, James W
Dept of Zoology
Butler Univ
Indianapolis Ind 46208

BIASI, Persic de
Instituto Butantan
Seccao do Artrópodos Peconhentos
Caixa Postal 65
Sao Paulo SP
Brasil

BIXLER, David E. **
Chaffey College
Alta Loma CA 91701

BOWLING, Thomas A. *
Dept of Entomology
Natural Science Bldg
Michigan State Univ
East Lansing Mich 48823

BRADY, Allen R.
Dept of Biology
Hope College
Holland Mich 49423

BRAGG, Philip D. *
4610 W 6th Ave
Vancouver 8 B.C.
Canada

BRIGGS, Carey *
1932 Beacon St Apt 4
Brookline Ma 02146

BRIGGS, Thomas S. **
Galileo High School
845 Corbett Ave
San Francisco Ca 94131

BRITISH MUSEUM (NATURAL HISTORY)
GENERAL LIBRARY *
Cromwell Road
London S.W.7
England

BROOKHART, Jack **
7393 S. Tamarac
Englewood Colo 80110

BROWN, Kathy **
2809 Northaven Rd
Apt 2099
Dallas, Tx 75229

BROWN, Wynne *
Southwest Research Station
Portal Ariz 85632

BUCHERL, Wolfgang
rua Sagarana 152,
Vila Madalena
05444 SAO PAULO SP
Brasil

BUCKLE, Donald J. *
2010 Lorne Ave
Saskatoon Saskatchewan
Canada

BUSKIRK, Ruth
Dept of Zoology
Univ of California
Davis CA 95616

BUTCHER, Mary
University College
Oxford, England

C

CAPOCASALE, R
Durazno 1907 BIS
Montevideo, Uruguay

CARICO, James E. **
Dept of Biology
Lynchburg College
Lynchburg VA 24504

CARNEGIE MUSEUM LIBRARY *
4400 Forbes Ave
Pittsburgh Penna 15213

CARPENTER, Rose M. *
4507 McNeil St
Wichita Falls Tx 76308

CARTER, Richard T. **
Dept of Anthropology
Univ of Manitoba
Winnipeg Manitoba
Canada

CARLYSLE, Carol
Dept of Entomology
Univ of Florida
Gainesville Fla 32601

CASEY, Ernest R. **
1005 S.W. 2nd Ave
Gainesville Fla 32601

CHICKERING, A. M.
Museum of Comparative Zoology
Harvard University
Cambridge Mass 02138

COLORADO STATE UNIV
The Libraries *
Fort Collins, Colo 80521

COLORADO STATE UNIV LIBRARIES
Serials Section *
Fort Collins, Colo 80521

COCKE, John A. L. **
Oxford Scientific Films Ltd.
Long Hanborough,
Oxford OX7 2LD England

COSTA, Dra. Ana Timoteo de
Arachnidos
Museo Nacional Quinta da Boa Vista
Z. C. - 08 Rio de Janeiro
Brasil

COYLE, Frederick A. *
Dept of Biology
Western Carolina Univ
Cullowhee N. C. 28723

CRAIG, Patrick R. **
2337 Grant
Berkeley CA 94703

CRANDALL, Robert H. **
1992 N. Mar Vista
Altadena CA 91001

CRAWFORD, Clifford S. **
Dept of Biology
Univ of New Mexico
Albuquerque N.M. 87106

CRAMFORD, F. T.
Dept of Psychology
Florida State University
Tallahassee Fla 32306

CRAMFORD, Rod *
Thomas Burke Memorial
Washington State Museum
Univ of Washington
Seattle WA 98105

CROCKER, J.
66 Outwoods Drive
Loughbough, Leics
LE11 3LU England

CUTLER, Bruce *
1747 Eustis St
St. Paul Minn 55113

D

DEVGE, Robert D
Dept of Physiology
Johns Hopkins Medical School
Baltimore Md 21205

DINGERUS, Guido *
55 Ecology House
Cornell University
Ithaca New York 14850

DONDALE, C. D. **
Entomology Research Institute
Canada Agriculture
Ottawa, Ontario K1A 0C6
Canada

DOHRIS, Peggy Roe *
Henderson State College
Arkadelphia, Ark. 71923

DREN, Leslie C.
Museum of the Rockies
Montana State Univ
Bozeman Mont 59715

DREW, William A **
Entomology Dept
Okla State Univ
Stillwater Okla 74074

DREWS, David
120 S. 5th St
Warren Minn 56762

DREWICHO, R. O.
Entomology Research Div
U.S.D.A. P.O. Box 232
Kerrville Tx 78028

DUMITRESCU, Dan *
Musee d'Histoire Naturelle
"Gr. Antipa"
1, Chaussee Kisseloff
Bucarest, Roumanie

DURBIN, David *
908 Steiner St
San Francisco CA 94117

E

EASON, Ruth L. R.
6 Highland Estates
Columbia Missouri 65201

EBERHARD, William G *
University of Cali
Cali, Columbia

EDGAR, Arlan L. **
Alma College
Alma, Mich 48801

EDWARDS, G. B.
409 NE 50th Terr.
Gainesville Fla 32601

EICKSTEDT, Vera R. D. von
Instituto Butantan
Caixa Postal 65
Sao Paulo SP Brasil

ENDERS, Frank *
Dept of Zoology
Univ of Texas
Austin Tx 76712

ENNIK, Franklin *
7760 Stockton Ave
El Cerrito CA 94530

ENNS, Wilbur R **
Univ of Missouri
1-87 Agriculture Bld
Columbia Mo 65201

ENTOMOLOGY RESEARCH *
LIBRARY
Agriculture Canada
Ottawa, Ontario K1A 0C6
Canada

F

FARR, James A. *
Dept of Biol Sciences
Florida State University
Tallahassee Fla 32306

FIELD MUSEUM OF NATURAL HISTORY
LIBRARY *
Chicago Illinois 60605

FIRSTMAN, Bruce L. **
Cal Poly State Univ
3801 W Temple Ave
Pomona CA 91768

FLOYD, Linda *
245B 43rd Ave
San Francisco CA 94116

FORSTER, Raymond R *
Ofago Museum
King St
Dunedin, New Zealand

FOWLER, D
Dept of Biology
Western Michigan Univ
Kalamazoo Mich 49001

FOX, F
School of Tropical Medicine
San Juan, Puerto Rico 00905

FOX, William K
Dept of Zoology
Arizona State Univ
Tempe Ariz 85281

FRANCKE, Oscar F *
Dept of Zoology
Arizona State Univ
Tempe Ariz 85281

FREIRE-MAIA, Linéu
Dpto. de Fisiologia
Faculdade de Medicina do
Universidade Federal de
Minas Gerais
Belo Horizonte, Brasil

FRIEDRICH, Victor
Dept of Neuropathology
Harvard Medical School
25 Shattuck
Boston Mass 02115

FRINGS, Hubert *
Dept of Zoology
Univ of Oklahoma
730 Van Vleet Oval
Norman OK 73069

FRONIER, Saul
Curator, U.C.R. Insect Coll.
Univ of California
Riverside CA 92502

FRONK, Don W **
Colorado State Univ
Dept Zoology-Entomology
Ft. Collins Colo 80521

FUNK, Richard C *
Dept of Zoology
Eastern Illinois Univ
Charleston Ill 61920

G

GABEL, J. Russel **
440 Monticello St
San Francisco Ca 94127

GEORGIA SOUTHWESTERN COLLEGE
LIBRARY *
Americus, GA 31700

GERSCHMAN de PIKELIN, B. S
Museo Argentina de
Ciencias Naturales
"Bernardino Rivadavia"
Avda. Angel Gallardo 470
Buenos Aires Argentina

GERTSCH, Willis J **
Curator Emeritus American
Museum of Natural History
Portal Ariz 85632

GLADNEY, WILLIAM J
Entomology Research Division
U.S.D.A. P.O. Box 232
Kerrville Tx 78028

GONZALEZ-SPONGA, M.A. **
Inst. Pedagogico. Dpt. Tecnologia
Audiovisual
Av. Paez - El Paraiso
Caracas, D. F. Venezuela

GOODNIGHT, Clarence J **
Western Michigan Univ
Kalamazoo Mich 49001

GORHAM, John R **
Arctic Health Research Center
Fairbanks, Alaska 99701

GORTON, Ralph J
Lansing Community College
419 N Capitol Ave
Lansing Mich 48914

GREENSTONE, Matthew *
Dept of Zoology
Univ of California
Berkeley Ca 94720

GRISWOLD, Charles E *
924 A Taylor St
Albany CA 94706

GRUBER, Jurgen *
1014 Wien Naturhist Museum
1016 Wien B.6.11/12
Austria List 212 Int. 4155 hs

GUARISCO, Hank *
Box 332 RR2
Lawrence Kansas 66044

H

HADLEY, Neil F *
Arizona State Univ
Tempe Ariz 85281

HAGSTRUM, David W *
USDA Insect Attractants
Behavior & Basic Biol Res. Lab
P. O. Box 14565
Gainesville Florida 32601

HALLAN, Joel
226-10 Francis Lewis Blvd
Cambria Hts. N. Y. 11411

HARADON, Richard M. Jr.
502 Palisades Ave
Santa Monica CA 90402

HARDMAN, J. W. *
Dept of Biol Sciences
Simon Fraser Univ
Burnaby 2, B. C.
Canada

HARP, Joel M *
3606 S. Hughes
Amarillo Tx, 79110

HARPER, Charles A **
Bechtel Corp
P. O. Box 3955
San Francisco CA 94119

HAYNES, Dean L
Dept of Entomology
Michigan State Univ
East Lansing Mich 48823

HEEREN University *
Jerusalem, Israel

LIBRARY - BIBLIOTHEK *
Zoologisches Institut d. Univ.
Berliner Str. 15
69 Heidelberg
German Federal Republic

HIGASHI, Galle A *
2244 Kula Lolea Dr
Honolulu HI 96819

HILL, Stuart Baxter **
MacDonald Campus of McGill Univ
P. O. Box 86
Ste Anne de Bellevue
Quebec, Canada 800

HITE, Maxine **
Arkansas State Univ
Drawer WW
State Univ, Ark, 72467

HJELLE, John T
Calif Academy of Sciences
Golden Gate Park
San Francisco CA 94118

HCEBS, Donna E **
Biology Dept
Univ of New Mexico
Albuquerque N.M., 87131

HCFE, C. Clayton **
Univ of New Mexico
Biology Dept
Albuquerque N.M., 87131

HOFFMAN-SANDOVAL, Anita *
Campestre 27
San Angel Inn
Mexico 20 D.F. Mexico

HOLMBERG, R. G. *
Dept of Biol. Sciences
Simon Fraser Univ
Burnaby 2, B. C. Canada

HOW, Kevin S *
Galileo High School
667 39th Ave
San Francisco CA 94121

HORNER, Norman
Biology Dept
Midwestern Univ
Wichita Falls Tx 76308

HOWARTH, Francis G *
Bernice Bishop Museum
P. O. Box 6037
Honolulu HI 96818

HOWELL, James O
Univ of Georgia Experiment Sta
Experiment GA 30212

HUBBARD, Michael D. *
Dept of Biol Sciences
Florida State Univ
Tallahassee, Fla 32306

HYATT, K. H.
British Museum(Natural History)
Cromwell Road
London SW 7, England

IMAMURA, Taiji *
Dept of Biology
Ibaraki University
Bunko 2-chome 1-1
Mito, Ibaraki Prefecture
Japan

JACKSON, Robert R *
Apt 23 1737 Virginia St
Berkeley CA 94703

JACOBSON, Larry **
3024 Enders Ave
Bellingham, Wash 98225

JENNINGS, Daniel T **
Rocky Mt. Forest & Range Exp.Sta.
5423 Federal Bldg.
517 Gold Ave SW
Albuquerque, N. M. 87101

JILLSON, Ray
Whittier Narrows Nature Center
1000 N. Durfee Ave.
So. El Monte CA 91733

JOHNSON, Allen
2330 N. Kedzie
Chicago ILL 60647

JOHNSON, Bob D
Dept of Biology
Univ of Dayton
Dayton, Ohio 45409

JUDD, William W.
Dept of Zoology
Univ of Western Ontario
London, Ontario

JUNG, Albert **
Zoology Dept
Univ of Florida
Gainesville Fla 32601

KAMM, Dwight
Div. of Biol Sci., Snow Hall
Univ of Biosci
Lawrence, Kansas 66044

KARPINSKI, Mary E *
Niemann Apt C-24
Norman Okla 73069

KASTON, B. J. **
5484 Hewlett Dr.
San Diego, CA 92115

KILLEBREW, Don W *
310 Redmon Dr., Apt 125
College Station, TX 77840

KJELLESVIG-WAERING, Erik N. **
Amoco International Oil Co.
Box 8368
Chicago Ill 60680

KLEE, George E
Dept of Biology
Kent State Univ
Stark Regional Campus
Canton, Ohio 44720

KNOST, Susan J. *
616 Masonic Park Road
Marietta, Ohio 44570

KNOWLTON, George F.
Zoology (Entomology)
Utah State Univ
Logan, Utah 84321

KRAMER, Steve
424 E. Foothill Blvd, Apt B
Monrovia, CA 91016

KRAUS, Otto, Prof. Dr. *
Zoologisches Institute
und Zoologisches Museum
Univ. Hamburg, Papendamm 3
D-2 Hamburg - 3
Germany

KRIVDA, Walter
P.O. Box 864
The Pas, Manitoba
Canada

KUTCHER, Steven R
Biology Dept
California State College
Long Beach CA 90840

LARREA, Catherine
2458 43rd Ave
San Francisco CA 94116

LAWLER, Nan **
1753 Grand Ave
Santa Barbara, CA 93103

LEE, Vincent F *
318 Arguello Blvd, Apt 1
San Francisco CA 94118

LEECH, Robin E **
Entomology Research Inst.
Central Experimental Farm
Ottawa Ont K1A 0G6
Canada

LEIGH, Thomas F **
Univ of California
17053 Shafter Ave
Shafter, CA 93253

LEVI, Herbert W **
Museum of Comparative Zoology
Harvard Univ
Cambridge Mass. 02138

LIBERIA Martinez Perez *
Seccion Revistas
Ref: Dr. Gaceo
Rambla de Catalunya 60
BARCELONA -7 Spain

LICHT, Edwin L. **
Univ of Colorado Museum
Boulder, Colo 80502

LISE, Arno Antonio
Pontificia Universidade Catolica
do Rio Grande do Sul
Museu de Ciencias
Avenida Ipiranga 6681
Porto Alegre, Brasil

LOFRANO, Fred
2458 43rd Ave
San Francisco CA 94116

LOWRIE, Donald C **
Rt. 2, Box 331
Sante Fe, N. M. 87501

LUBIN, Yael D. *
Smithsonian Tropical Res. Inst.
P. O. Box 2072
Balboa, Canal Zone

LUTZ, G. W.
Dept of Zoology
Vivarium Bldg
Healey & Wright Sts
Champaign, Ill 61820

M

MAC MARCH, James A. **
Dept of Zoology
Utah State Univ (UMC 531)
Logan, Utah 84322

MALCOLM, David R. **
Pacific Univ
Forest Grove, Oregon 97116

MANUEL, Raymond
Dept of Entomology
MacDonald College of
McGill Univ
Ste. Anne de Bellevue 800
Montreal P. Q.
Canada

MARER, Patrick J. *
Dept of Entomology
Univ of California
Davis CA 95616

MARINKELLE, C. J.
Universidad de los Andes
Calle 1B-A, Carrera 1-E
Apartado Aereo 4976
Bogota, D. E. Columbia

MARQUA, David G. **
Los Angeles County Nature Centers
1000 N. Durfee Ave
S. El Monte CA 91733

MARQUEZ-MAYAUCHI, Carlos. **
Instituto De Biologia
Universidad Nacional
Autonoma De Mexico
Mexico D. F. 20 Mexico

MARTIN, Eliezer F.
Museo de Historia Natural
de la Ciudad de Mexico
Nuevo Bosque de Chapultepec
Apartado 18, D. F. Mexico

MATTHIESEN, Fabio Aranha
Faculdade de Filosofia
Ciencias e Letras de Rio Claro
Caixa Postal 178
Rio Claro, SP, Brasil

MAURY, E. A.
Museo Argentina de
Ciencias Naturales
"Bernardino Rivadavia"
Casillo de Correo 10
Buenos Aires, Argentina

McALISTER, W. H. *
The Victoria College
2200 E. Red River
Victoria Tx 76401

McCRONE, John D. **
University of Iowa
Iowa City, Iowa 52242

McGHEE, Charles R. **
Dept of Biology
Middle Tennessee State Univ
Box 292
Murfreesboro, Tenn 37130

MESIBOV, Bob
240 Cabrini Blvd
New York, N. Y. 10033

MITCHELL, Robert W. **
Dept of Biology
Texas Tech Univ
Lubbock, Tx 79409

MCEUR, John E. *
Zoology Dept
Univ of Georgia
Athens GA 30602

MONRCE, Ronald **
20 Samara St Sunnybank
Brisbane, QLD 4109
Australia

MCCODY, Marjorie J. *
205-C No. Hall Ave
Visalia, CA 93277

MOCRE, Frank J.
Dept of Entomology
Ohio State Univ
1735 Neil Ave
Columbus Ohio 43210

MCRETON, Ann **
P. O. Box 801
Ocean Springs Miss 39564

MORGAN, Paul N. *
VA Hospital
Medical Research
300 E. Roosevelt Rd
Little Rock Ark 72206

MORRISON, Eston O. **
Dept of Biol Sciences
Tarleton State College
Stephenville Tx 76401

MOSIG, Dirk W. *
Georgia Southwestern College
Dept of Psychology
715 Pine Ave
Americus GA 31709

MUCHMCRE, William B. **
Dept of Biology
Univ of Rochester
Rochester N.Y. 14627

MULLEN, Gary R. *
102 Highland Pl.
Ithaca N. Y. 14850

MULLINEX, Carolyn *
Entomology Dept
California Academy of Sciences
Golden Gate Park
San Francisco CA 94118

MUWA, Martin H. **
P. O. Box 1554
Silver City N.M. 88061

MUNDEL, Peter *
Dept of Biol Science
University of Texas
El Paso Tx 79968

MURPHY, John & Frances **
323 Hanworth Road
Hampton, Middlesex TQ12 3EJ
England

MUSEE ROYAL DE L'AFRIQUE CENTRALE *
Steenwet op Leuven 13
8-1980 Tervuren (Belgique)

MUTCHER, Steven R.
Biology Dept
California State College
Long Beach CA 90801

N

NATAL MUSEUM, LIBRARY *
Loop Street
Pietermaritzburg
South Africa

NEAL, John W. *
USDA ARS East
Bldg 467-C
Beltsville MD 20705

NELSON, John M. **
Oral Roberts Univ
7777 So. Lewis
Tulsa OK 74105

O

O'HARE, Erin
10 J. U. Willets Rd. W
Roslyn N. Y. 11576

OHIO STATE UNIV LIBRARY *
Serial Division
1858 Neil Ave
Columbus OH 43210

OPELL, Brent D
Dept of Zoology
Southern Illinois Univ
Carbondale Illinois 62901

OTAGO MUSEUM *
King Street
Dunedin, New Zealand

OWEN, ANN
Dept of Zoology
Univ of Wisconsin
Madison, Wisc. 53706

UNIVERSITY OF OXFORD *
Hope Dept of Zoology (Entomology)
Oxford, England

P

PARKER, J. R.
Peare Tree House
The Green, Blennerhasset
Carlisle, Cumberland, England.

PARKER, W. S. *
Biology Dept
Univ of Utah
Salt Lake City, Utah 84112

PEAKALL, David B
Langmuir Lab
Cornell Univ
Ithaca N. Y. 14850

PECK, William B. **
Dept of Biology
Central Missouri State Univ
Warrensburg MO 64093

PEONEAULT, Andre *
365 Rue Morin
Chicoutimi, Quebec
Canada

PENNIMAN, Andrew J. **
Dept of Zoology
Ohio State Univ
1735 Neil Ave
Columbus Ohio 43210

PETTIT, Billy H
1795 Medallion Court
Mississauga, Ontario
Canada

PICKLE, John H Jr. *
Dept of Entomology
Oklahoma State Univ
Stillwater OK 74074

PINTER, Lawrence **
Dept of Education
Pago Pago, Tutuila Is.
American Samoa 96799

PLATNICK, Norman **
Dept of Entomology
American Museum of Natural History
Central Park West at 79th St
New York N.Y. 10024

PRENTICE, John H
1825 T Street NW, No. 608
Washington D. C. 20009

PRESTWICH, Kenneth N *
Dept of Zoology
Univ of Florida
Gainesville Fla 32601

PURCUE, D. Alan **
483 Edison Rd
Trumbull Conn 06611

Q

QUINTERO, Diomedes **
Harvard Univ
Museum of Comparative Zoology
Cambridge Mass 02138

R

RADOVSKY, Frank J *
c/o Bishop Museum
P. O. Box 6037
Honolulu, Hawaii 96818

RALSTON, James
Dept of Zoology
220 Natural Sciences Bldg
Michigan State Univ
East Lansing Mich 48823

RANCALL, John B **
2370 S.W. Archer Road, Apt 71
Gainesville Fla 32608

RANDALL, Winnifred
Dept of Biology
Case Western Reserve Univ
Cleveland, Ohio 44106

REDDELL, James
Dept of Biology
Texas Tech Univ
Lubbock, Tx 79409

REDNER, Jim
Entomology Research Inst
K. W. Neatby Bldg
Carling Ave
Ottawa, Ont. K1A 0C6
Canada

REEDER, William G
Dept of Zoology
Univ of Florida
Gainesville, Fla 32601

REISKIND, Jonathan **
Dept of Zoology
Univ of Florida
Gainesville, Fla 32601

RENAULT, Thadde R
Forest Research Lab.
P. O. Box 4000
Frederickton, New Brunswick
Canada

RICHARDSON, Mary W
Dept of Zoology
Southern Illinois Univ
Carbondale Ill 62901

RICHMAN, David B **
Unif of Arizona
College Station
P. O. Box 3463
Tucson, Ariz 85722

RIDDLE, Wayne A *
Dept of Biology
Univ of New Mexico
Albuquerque, N. M. 87106

RIECHERT, Sue
Zoology Dept, Hesler Bldg
Univ of Tennessee
Knoxville Tenn 37916

ROBINSON, Michael H *
Smithsonian Tropical Research Inst
P. O. Box 2072
Balboa, Canal Zone

ROSIN, Ruth
16 West 82nd Street
New York N. Y. 10024

ROSSMAN, Douglas A **
Museum of Zoology
Louisiana State Univ
Baton Rouge, La 70803

ROTH, Vince D **
Southwestern Research Station
American Museum of Natural History
Portal, Ariz 85632

ROVNER, Jerome S *
Dept of Zoology
Ohio Univ
Athens Ohio 45701

ROWLAND, J. Mark *
Dept of Biology
P. O. Box 4149
Lubbock, Tx 79049

RUNHOLT, Muriel Monteleone **
Quarters 6405 A
USAF Academy
Colorado 80840

S

SADANA, Dr. G. L.
Dept of Zoology-Entomology
Punjab Agricultural Univ
Ludhiana, Punjab
India

SARINANA, Frank O
City of Hope Medical Center
Duarte, CA 91010

SAUER, Richard J *
Dept of Entomology
Michigan State Univ
East Lansing, Mich 48823

SAVORY, Theodore H. *
11 Orchard Rd
Dorking, Surrey
England

SCHIAPELLI, R. O.
Museo Argentino de Ciencias
Naturales "Bernardino Rivadavia"
Av. Angel Gallardo 470
Casilla de Correo 10
Buenos Aires, Argentina

SCHICK, Robert **
California Academy of Sciences
Golden Gate Park
San Francisco CA 94118

SCHLINGER, Evert I **
Dept of Entomological Sciences
Univ of California
Berkeley CA 94720

SCHWOLLER, Ron **
c/o Irene Rosenberg
3755 Bird Rd.
Miami Fla 33146

SEDGWICK, Walter **
Bar M Ranch
Boston GA 31626

SEIDEL, D. R. *
Rt. 1, Box 67
Crawford, W. Va. 26343

SHADAB, Mohammad Umar
Dept of Entomology
American Museum of Natural History
Central Park West at 79th Street
New York, N. Y. 10024

SHEAR, William A **
Concord College
Athens, W. Va. 24712

SHENEFELT, R. D.
Insectarium, Dept of Entomology
Univ of Wisconsin
346A Russell Labs
Madison Wisc. 53706

SILER, Timothy
6883 N. Elm Tree Rd
Milwaukee Wis 53217

SNETSINGER, R. J.
102 Patterson Bldg
Pennsylvania State Univ
University Park, Penna 16802

SCARES, Hella Eller Monteiro *
Faculdade de Ciencias Medicas e
Biologicas de Botucatu
Caixa Postal 103
Rubiao Junior, S. Paulo 1860
Bresli

SOLEGLAD, Michael E **
3927 Polack Street
San Diego CA 92110

SPEILMAN, A
Dept of Tropical Public Health
Harvard School of Public Health
25 Shattuck St
Boston Mass 02115

STAHNKE, Herbert L **
2016 E. Laguna Dr.
Tempe, Ariz.

STELNICKI, Thomas D
1575 St. Charles Ave
Lakewood Ohio 44107

STEWART, Kenneth #
Dept of Biology
North Texas State Univ
Denton Tx 76203

STOCKTON, William D *
California State Univ
6101 E. 7th St
Long Beach Ca 90840

STONE, Karl J **
813 NW 20th St
Minot N. D. 58701

STORE, Mark
161 Grand View Ave.
Hamden Conn 06514

STRANDTWANN, Russell W **
Dept of Biology
Texas Tech Univ
Lubbock Tx 79409

STRI LIBRARY *
P. O. Box 2072
Balboa, Canal Zone

T

TANAKA, Hozumi *
Entomological Laboratory
College of Agriculture
University of Osaka Prefecture
Mozu-Umemachi Sakai
Osaka, Japan 591

TECNOLOGIA AUDIVISUAL *
Instituto Pedagogico
Avenida Paéz - El Paraíso
Caracas, Dto. Federal
Venezuela

THEYKE, Siegfried E.
Res. Specialist - Ent.
1 - 87 Agriculture Bldg
Columbia Mo 65201

THILL, Joseph F. *
36 Allegany Ave
Kenmore N. Y. 14217

THOMPSON, Mel E. **
450 Church Hill Rd
Sierra Madre CA 91024

THOMPSON, J. R.
926 Harvard E.
Seattle Wash 98102

THORN, Erik
1164 Patrick Street
Victoria, B. C.
Canada

TIETJEN, William L. **
Biology Dept
Georgia Southwestern College
Americus, GA 31709

TRIGG, John R. **
Univ of Dayton
Dayton, Ohio 45409

TRIPP, John R. **
748 1/2 E. Walnut St.
Lakeland Fla 33801

TRUDEAU, Thomas **
Dept of Wildlife & Fisheries
Sciences
Texas A & M Univ
College Station
Texas 77843

TURNBULL, A. L.
Simon Fraser Univ
Burnaby 2, B. C.
Canada

TUXEN, Phil S. L. *
Zoologisk Museum
Universitetsparken 15
2100 Kobenhaven O
Denmark

U

UBICK, Darrel
2336 Jones St
San Francisco CA
94133

UNIVERSITY OF OXFORD *
University Museum
Oxford OX1 3PH
England

UNIVERSITY OF WASHINGTON *
Library, Serials Division
Seattle WA 98195

UNIVERSITY OF WISCONSIN *
The Memorial Library
728 State Street
Madison Wisc 53706

UNZICKER, John D. *
Illinois Natural History Survey
Urbana, Illinois 61801

UTEZ, George W. *
Dept of Zoology
Univ of Illinois
202 Vivarium Bldg
Wright & Healy Sts
Champaign, Ill 61820

V

VACHON, Max *
Secrétaire general du C.I.D.A.
61, rue de Buffon
Paris Veme, France

VAIL, David
Dept of Zoology
220 Natural Science Bldg
Michigan State Univ
East Lansing Mich 48823

VALERIO, Carlos E.
Museo de Zoologia
Universidad de Costa Rica
Ciudad Univ "Rodrigo Ració"
Costa Rico, Amer Central

VAN DYKE, Don *
P. O. Box 114
Wrightwood CA 92397

VINCENT, Leonard S. *
Univ of California
Dept of Entomology
Davis CA 95616

VOGEL, Beatrice R. **
2505 Ashgate Dr
Austin Tx 78758

W

WALCOTT, Charles
Div of Biological Sciences
State Univ of New York
Stony Brook, N. Y. 11790

WALLACE, Howard K. *
920 SW 1st Ave
Gainesville Fla 32601

WANLESS, F. R.
Arachnology
Brit Mus (Nat Hist)
Cromwell Road
London SW 7, England

WEAVER, Andrew A. **
The College of Wooster
Dept of Biology
Wooster, Ohio 44691

XYZ

YAGINUMA, Takeo *
Biol Laboratory
Ohtemon-Gakulin
230 Ai, Ibaraki
Osaka, Japan

YEARGAN, Kenneth *
3 C Solano Pk. Apts
Davis CA 95616

+ + +

AYREY, Richard F.
320 W 87 St.
New York N. Y. 10024

GABBUTT, Peter D. *
Dept of Zoology
The University
Manchester M13 9PL, U. K.

HENDERSON STATE COLLEGE *
Attn: Dr. Peggy Dorris
HSC Box 642
Arkadelphia Ark 71923

HUGHES, Stephen E. *
Univ of Miami
5616 Merrick Dr. Apt 220
Coral Gables Fla 33146

LUCAS, William J.
1217 Houseman N.E.
Grand Rapids Mich 49505

MENDERS, Karen
P.O. Box 3197
University Station
Columbus Ohio 43210

OLMSTEAD, Jack V. *
Dept of Biology
Calif State Univ
Long Beach CA 90801

SZERLIP, Sigurd L. *
University of California
4911 Hartnett Ave
Richmond CA 94804

ZOOLOGISCHES INSTITUT *
der Universität
Hegewischstrasse 3
23 Kiel B. R. D. Western Germany

ELLIOTT, William R. *
Texas Tech Univ
Dept of Biology
Lubbock Texas 79409

ERWIN, Robert L. **
P. O. Box 20238
Baton Rouge LA 70803

WEBB, James P. **
Dept of Biology
Texas Tech Univ
Lubbock Tx 79409

WESTON, Bob
3031 Glen Oaks St
Clearwater Fla 33515

WHARTON, G. W. *
Acarology Laboratory
Ohio State Univ
484 West 12th Ave
Columbie Ohio 43210

WHITCOMB, Willard H
Dept of Entomology
USDA ARS ENT
P. O. Box 14565
Gainesville Fla 32601

WHITE, Geraldine E
P. O. Box 114
Shandon CA 93461

WILLIAMS, Stanley C. **
Dept of Biology
California State Univ
San Francisco CA 94132

WILSON, Dennis *
128 W. Springs
Bonner Springs, Kan 66012

WISE, David *
Museum of Zoology
Univ of Michigan
Ann Arbor, Mich 48104

WITT, Peter N. *
N. C. Dept Mental Health
Div of Research
Box 7532
Raleigh, N. C. 27611

WOLFF, R. J.
Dept of Biology
Hope College
Holland Mich 49423

WRATH, Mike
2458 43rd Ave
San Francisco CA 94116

WRENN, William J. **
Dept of Biology
Univ of North Dakota
Grand Forks N. D. 58201

+++

BRIGNOLI, Paolo M. **
Istituto di Zoologia
dell'Università
via dell'Università, 32
00100 ROMA Italy