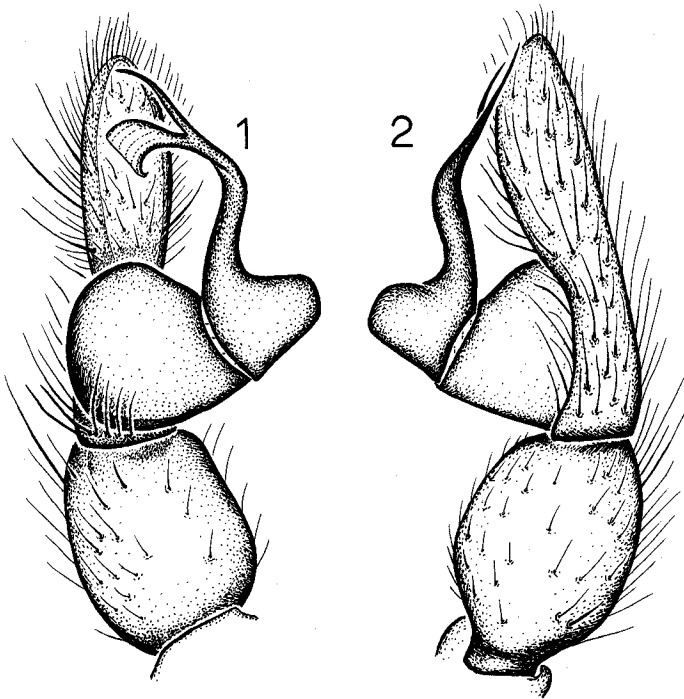


**ON THE CHILEAN SPIDERS OF THE FAMILY
PALPIMANIDAE (ARACHNIDA, ARANEAE)**

Only two species of palpimanid spiders have previously been recorded from Chile. *Anisaedus pellucidus* Platnick is known only from Antofagasta and Atacama provinces in northern Chile, and (judging by the presence of a translucent embolar flange) seems most closely related to *Anisaedus rufus* (Tullgren) of northwestern Argentina (Platnick, N. I. 1975. Amer. Mus. Novit., 2562:1-32). Two localities can now be added to the only previous records of *A. pellucidus* from Atacama province (Platnick, N. I. 1977. J. Arachnol., 3:203-205): 40 km S Copiapó (700 m), 23-25 October 1983 (L. E. Peña G.), 1 male, and between El Tránsito and Pinte (1100-1600 m), 25-27 October 1980 (L. E. Peña G.), 1 male, 1 female, all in the American Museum of Natural History (AMNH).

The second species, *Otiotrops lanus* Platnick, is known only from the Quebrada de la Plata in Santiago province. It differs from all other previously known *Otiotrops* in having relatively small posterior median eyes separated by almost twice their diameter; this discrepancy was perhaps responsible for the original description of the species as a *Fernandezina* (Zapfe, H. 1961. Invest. Zool. Chilenas, 7:141-144). It was of particular interest, therefore, to discover (among material recently sent to the AMNH by Dr. Luis E. Peña G.) a male of a second Chilean species of *Otiotrops* from Maule province. The new species resembles *O. lanus*, rather than other *Otiotrops*, in eye pattern. Although



Figs. 1, 2.—Left male palp of *Otiotrops maulensis*: 1, ventral view; 2, retrolateral view.

outgroup comparison with the Stenochilidae indicates that the separated posterior median eyes are plesiomorphic, the distolaterally originating and distally bifid embolus suggests that the new taxon is indeed the sister species of *O. lanus*.

This work was supported by grants BSR-8312611 and BSR84-06225 from the National Science Foundation. The illustrations are by Dr. M. U. Shadab.

***Otiotrops maulensis*, new species**

Figs. 1, 2

Type.—Male holotype from W of Cauquenes, Maule, Chile (May 1984, L. Irarrazaval), deposited in AMNH.

Etymology.—The specific name refers to the type locality.

Diagnosis.—Males can be distinguished from those of all other *Otiotrops* except *O. lanus* by the widely separated posterior median eyes, and from those of *O. lanus* by the proximally bulging embolus (Figs. 1, 2).

Male.—Total length 3.28 mm. Carapace 1.55 mm long, 1.15 mm wide. Femur I 1.19 mm long, 0.54 mm wide. Cephalic area moderately elevated. Posterior median eyes separated by twice their diameter. Abdomen with scattered brownish purple patches on pale brown background. Claw tufts reduced to few setae surrounding onychium. Palp with globose tibia, long narrow cymbium, and retrolaterally prolonged bulb almost entirely occupied by reservoir. Embolus originating retrolaterally near tip of bulb, distally bifid, with proximal lobe translucent, distal lobe sharply pointed (Figs. 1, 2).

Female.—Unknown.

Material Examined.—Only the holotype.

Norman I. Platnick, Department of Entomology, American Museum of Natural History, New York, New York 10024.