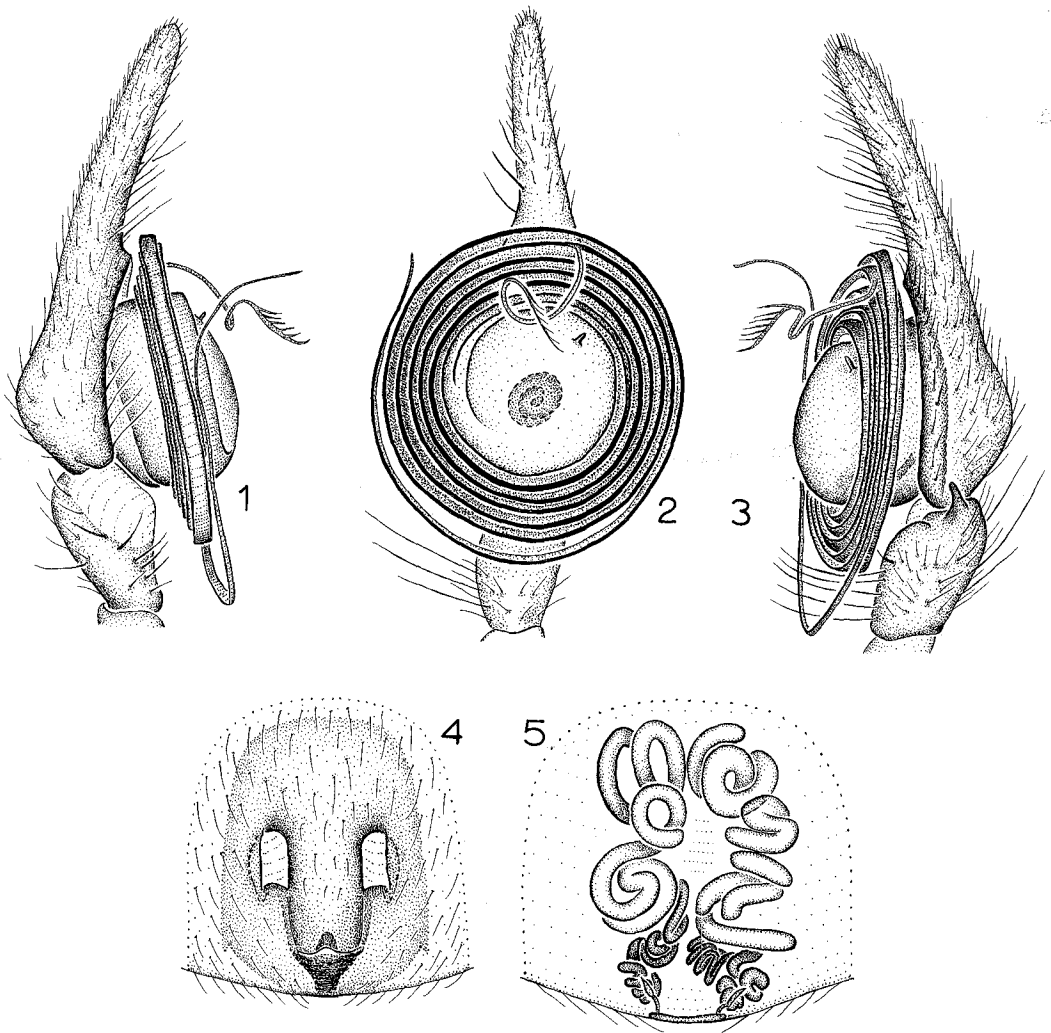


SUPPLEMENTARY NOTES ON THE GROUND SPIDER FAMILY CITHAERONIDAE (ARANEAE, GNAPHOSOIDEA)

As delimited in a recent revision (Platnick 1991), the family Cithaeronidae consists of two genera of rarely collected ground spiders from the Old World. Since the completion of that revision, several interesting specimens have come to hand, including the first record of the group from Europe, a new species from India, and the first known male of the genus *Inthaeron*. We report here on new material from the collections of the Zoological Survey of India (ZSI) as well

as on specimens kindly made available by Drs. J. Wunderlich, Straubenhardt, Germany (CJW), J. Coddington, National Museum of Natural History, Smithsonian Institution (USNM), and V. Ovtsharenko, Zoological Institute, Academy of Sciences, St. Petersburg (ZISP). The format of the descriptions follows that of the revision. Assistance with illustrations was supplied by Dr. M. U. Shadab of the American Museum of Natural History.



Figures 1-5.—1-3. *Inthaeron rossi* Platnick, left male palp: 1. prolateral view; 2. ventral view; 3. retrolateral view. 4, 5. *Cithaeron indicus*, new species, epigynum: 4. ventral view; 5. dorsal view.

Cithaeron praedonius O. P.-Cambridge

New Records.—**Greece:** *Peloponnese:* Argolis, Epidaurus, May 14, 1985 (L. Paraschi, CJW), 1♂. **Iran:** *Tehran:* Tehran, May 28, 1964 (J. Neal, USNM), 1♂. **Turkmenistan:** *Krasnovodsk:* near Krasnovodsk Mtns., April 14, 1987 (A. A. Zyuzin, ZISP), 1♂.

Cithaeron indicus new species

Figs. 4, 5

Type.—Female holotype from Khalragad, Rajnandgaon District, Madhya Pradesh, India, December 20, 1983 (U. A. Gajbe, deposited in ZSI).

Etymology.—The specific name refers to the type locality.

Diagnosis.—Females of this species can easily be distinguished from those of the other known members of the genus by their elongated epigynal hood (Fig. 4).

Male: Unknown.

Female: Total length 6.79 mm. Carapace 2.90 long, 2.14 wide. Femur II 2.50 long. Eye sizes and interdistances: AME 0.14, ALE 0.12, PME 0.17, PLE 0.13; AME-AME 0.14, AME-ALE 0.04, PME-PME 0.04, PME-PLE 0.12, ALE-PLE 0.21; MOQ length 0.54, front width 0.41, back width 0.38. Epigynum with elongated anteromedian hood and anterolateral openings (Fig. 4); epigynal ducts wider anteriorly than posteriorly (Fig. 5). Leg spination: femora I-IV d1-0-0; tibiae: III v1p-1p-1p; IV v1p-1p-2; metatarsi: III v2-0-0; IV v2-1r-0.

Other material examined.—**India:** *Madhya Pradesh:* Keshala village, Harsitahsil, Hoshangabad District, January 1, 1990 (U. A. Gajbe, ZSI), 1♀.

Distribution.—Known only from central India.

Inthaeron rossi Platnick

Figs. 1-3

Diagnosis.—The newly discovered male has a distinctive, highly coiled embolus (Figs. 1-3).

Male: Total length 5.93 mm. Carapace 2.41 long, 1.80 wide. Femur II 2.68 long. Eye sizes and interdistances: AME 0.15, ALE 0.12, PME 0.20, PLE 0.13; AME-AME 0.10, AME-ALE 0.02, PME-PME 0.01, PME-PLE 0.06, ALE-PLE 0.14; MOQ length 0.40, front width 0.40, back width 0.41. Retrolateral tibial apophysis short; median apophysis reduced to tiny lobe; embolus with translucent, fringed flange (Figs. 1-3). Leg spination: femora I-IV d1-0-0; tibiae: III v2-1p-2; IV missing; metatarsi: III v2-1r-0; IV missing.

Female: Described by Platnick (1991).

New Record.—**India:** *Madhya Pradesh:* Bhesdehi, Betul District, March 31, 1990 (H. S. Sharma, ZSI), 1♂.

Distribution.—Known only from central India.

LITERATURE CITED

- Platnick, N. I. 1991. A revision of the ground spider family Cithaeronidae (Araneae, Gnaphosoidea). *American Mus. Novit.*, 3018:1-13.
- Norman I. Platnick:** Department of Entomology, American Museum of Natural History, Central Park West at 79th Street, New York, New York 10024 USA.
- U. A. Gajbe:** Zoological Survey of India, Central Regional Station, 424 New Adarsh Colony, Kamla Nehru Nagar, Jabalpur, Madhya Pradesh 482002 India.
- Manuscript received 18 January 1994, revised 17 March 1994.*