

NEW SPECIES AND RECORDS OF THE *ANYPHAENA CELER* GROUP IN MEXICO (ARANEAE, ANYPHAENIDAE)

Norman I. Platnick

Department of Entomology
The American Museum of Natural History
Central Park West at 79th Street
New York, New York 10024

ABSTRACT

Two new species, *Anyphaena leechi* and *A. bromelicola*, are described from Mexico; new records for other species of the *celer* group of *Anyphaena* are presented.

Through the courtesy of Dr. Robin E. Leech of the Alberta Environment Research Secretariat, Edmonton, I have recently had the opportunity to examine a significant collection of Mexican Anyphaenidae. Most of this material belongs to the recently revised *celer* group of *Anyphaena* (Platnick and Lau, 1975). In addition to two new species, about a dozen new state records are represented in the collection, including significant range extensions (*Anyphaena cumbre*) and intermediate records filling previously large distributional gaps (*Anyphaena catalina*). One of the new species was taken from bromeliads, a habitat which should be further searched for spiders. The format of the descriptions follows that used in the revision; the illustrations are by Dr. Mohammed U. Shadab.

Anyphaena leechi, new species

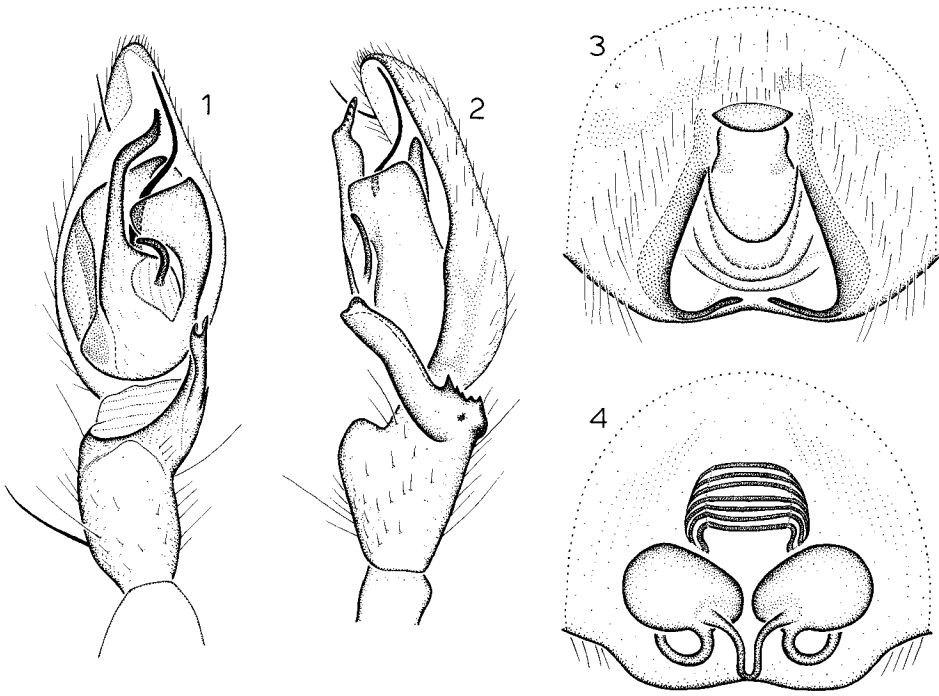
Figs. 1-4

Types.—Male holotype and female paratype from 12.4 miles south of Tecalitlán, elevation 5300 feet, Jalisco, Mexico (3 August 1967; R. E. Leech), deposited in the American Museum of Natural History.

Etymology.—The specific name is a patronym in honor of the collector of the type specimens.

Diagnosis.—*Anyphaena leechi* is closest to *A. cumbre* Platnick and Lau but may be distinguished by the serrate dorsal prong of the retrolateral tibial apophysis (Fig. 2) and the presence of four spermathecal ducts (Fig. 4).

Male.—Total length 4.95-5.49 mm. Carapace 2.38-2.83 mm long, 1.71-1.91 mm wide. Femur II 2.59-2.88 mm long (three specimens). Eye sizes and interdistances (mm): AME 0.06, ALE 0.10, PME 0.10, PLE 0.11; AME-AME 0.08, AME-ALE 0.04, PME-PME 0.17, PME-PLE 0.12, ALE-PLE 0.08. MOQ length 0.36 mm, front width 0.21 mm, back width 0.36 mm. Tip of median apophysis narrow, lobed (Fig. 1); dorsal prong of retrolateral tibial apophysis serrate (Fig. 2). Coxa III with knob, all coxae with cusp-like setae. Leg spination: patella III d1-0-0; tibiae: I p1-1-0, r1-1-0; II v3-4-0, r1-1-0; III p0-1-1, r0-1-1; metatarsi I, II r1-1-1.



Figs. 1-4.—*Anyphaena leechi*, new species: 1, palp, ventral view; 2, palp, retrolateral view; 3, epigynum, ventral view; 4, vulva, dorsal view.

Female.—Total length 5.13 mm. Carapace 2.30 mm long, 1.71 mm wide. Femur II 2.09 mm long (paratype). Eye sizes and interdistances (mm): AME 0.06, ALE 0.10, PME 0.09, PLE 0.12; AME-AME 0.11, AME-ALE 0.05, PME-PME 0.18, PME-PLE 0.12, ALE-PLE 0.09. MOQ length 0.39 mm, front width 0.22 mm, back width 0.36 mm. Epigynal surface ridged (Fig. 3); spermathecae each with two ducts (Fig. 4). Coxae unmodified. Leg spination: patellae III, IV d1-0-1; tibiae: I p1-1-0, r1-0-0; II v3-4-0, r1-1-0; III p1-0-1, v1p-1p-2; IV v1p-1p-2, r0-1-1; metatarsi: I p0-1-1; III v2-2-2.

Material Examined.—Two males collected with the types (R. E. Leech collection).

Anyphaena bromelicola, new species

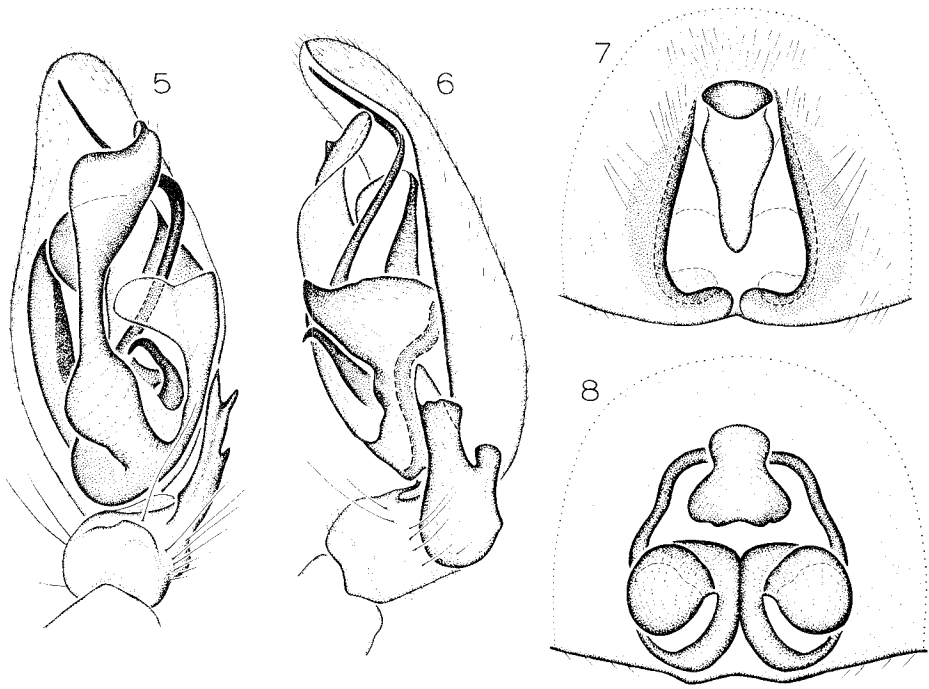
Figs. 5-8

Types.—Male holotype and female paratype collected from an unidentified bromeliad 10 miles east of San Cristóbal de las Casas, elevation 8200 feet, Chiapas, Mexico (10 December 1965; D. Whitehead, G. E. Ball), deposited in the American Museum of Natural History.

Etymology.—The specific name is from the stem of the botanical family Bromeliaceae and the Latin *incolo* (to inhabit).

Diagnosis.—*Anyphaena bromelicola* is closest to *A. gibba* O. P. Cambridge but may be distinguished by the long, rounded proteral extension of the retrolateral tegular apophysis (Fig. 5) and the much longer epigynal midpiece (Fig. 7).

Male.—Total length 4.68 mm. Carapace 2.20 mm long, 1.69 mm wide. Femur II 1.91 mm long (holotype). Eye sizes and interdistances (mm): AME 0.05, ALE 0.10, PME 0.10,



Figs. 5-8.—*Anyphaena bromelicola*, new species: 5, palp, ventral view; 6, palp, retrolateral view; 7, epigynum, ventral view; 8, vulva, dorsal view.

PLE 0.10; AME-AME 0.05, AME-ALE 0.04, PME-PME 0.12, PME-PLE 0.12, ALE-PLE 0.07. MOQ length 0.34 mm, front width 0.14 mm, back width 0.33 mm. Tip of median apophysis recurved, retrolateral tegular apophysis with prolateral extension (Fig. 5); dorsal prong of retrolateral tibial apophysis broad (Fig. 6). No coxae with knob; coxae II and III with cusp-like setae. Leg spination: femur II r0-1-1; tibiae: I, II p1-1-1, r1-1-1; III v1p-2-2; IV p1-0-1, v2-2-2; metatarsi: IV r1-1-1; III v2-2-2; IV r2-1-2.

Female.—Total length 5.11 mm. Carapace 1.91 mm long, 1.42 mm wide. Femur II 1.30 mm long (paratype). Eye sizes and interdistances (mm): AME 0.05, ALE 0.09, PME 0.09, PLE 0.09; AME-AME 0.07, AME-ALE 0.02, PME-PME 0.14, PME-PLE 0.09, ALE-PLE 0.05. MOQ length 0.31 mm, front width 0.17 mm., back width 0.32 mm. Epigynal midpiece relatively long (Fig. 7); spermathecae approximate, with wide ducts (Fig. 8). Coxae unmodified. Leg spination: tibiae: I p1-1-1, r1-1-1; II v3-3-0, r1-1-1; III p1-0-1, v1p-1p-2; metatarsi: I r0-0-1, II r1-1-1.

Material Examined.—Only the types.

NEW RECORDS

Anyphaena catalina Platnick: *Durango*: Highway 45, 22.5 mi. S Rodeo, elevation 5220 feet (10 September 1967; R. E. Leech), 1 male. *Oaxaca*: Highway 190, 33 mi. NW Oaxaca, elevation 7500 feet (4 September 1967; G. E. Ball, R. E. Leech), 2 males. *Puebla*: Highway 140, 4.9 mi. NE Zacatepec, elevation 8400 feet (26 August 1967; R. E. Leech), 1 male.

Anyphaena gibbosa O. P. Cambridge: *Jalisco*: near El Rincón, 33.7 mi. NW Los Volcanes, elevation 5400 feet (11 August 1967; R. E. Leech), 1 male.

Anyphaena cortes Platnick and Lau: *Jalisco*: NE slope, Volcán de Colima, elevation 9900-10,300 feet (1 August 1966; G. E. Ball, D. Whitehead), 2 males. *Mexico*: NE slope, Volcán Popocatepetl, elevation 12,300-12,800 feet (29 June 1966; G. E. Ball, D. Whitehead), 1 male, 1 female.

Anyphaena cumbre Platnick and Lau: *Durango*: Highway 40, 10.3 mi. E La Ciudad, elevation 9240 feet (9 September 1967; G. E. Ball), 1 female. *Jalisco*: 26.1 mi. S Tecalitlán, elevation 6800 feet (4 August 1967; R. E. Leech), 1 female. *Veracruz*: N side, Volcán Cofre de Perote, 13.3 mi. S las Vigas, elevation 11,500-13,500 feet (25 August 1967; R. E. Leech), 2 females.

Anyphaena encino Platnick and Lau: *Jalisco*: 5.5 mi. NW Cautla, elevation 6600 feet (6 August 1967; R. E. Leech), 1 female.

Anyphaena tancitaro Platnick and Lau: *Jalisco*: 10.8 mi. S Talpa de Allende, elevation 4900 feet (8 August 1967; G. E. Ball, T. L. Erwin), 1 male.

Anyphaena judicata O. P. Cambridge: *Michoacan*: Highway 15, 9.5 mi. W Morelia, elevation 6850 feet (18 August 1967; R. E. Leech), 2 males. *Veracruz*: N side, Volcán Cofre de Perote, 10 mi. S Las Vigas, elevation 9650 feet (24 August 1967; R. E. Leech), 1 female.

LITERATURE CITED

- Platnick, N. I., and A. Lau. 1975. A revision of the *celer* group of the spider genus *Anyphaena* (Araneae, Anyphaenidae) in Mexico and Central America. *Amer. Mus. Novitates* 2575:1-36.